

disperator[®] OPTION FOR FOOD WASTE SYSTEM

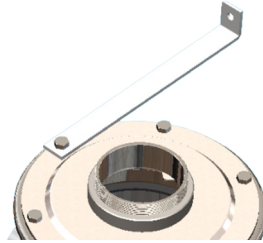
INSTALLATION MATERIALS



Electrical safety switch

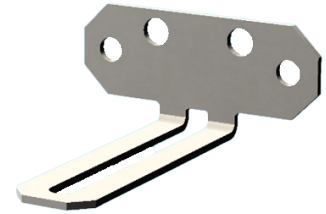
(Safety switch, lockable)

2-pole for 1-phase disposer 500V, 16A
3-pole for 3-phase disposer 690V, 25A



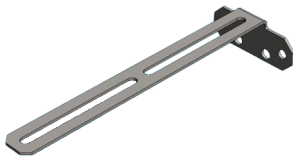
Torque protection bar for basic disposers with sink assembly model ATF-K, ATV-K och BS-K

Specify length when ordering.



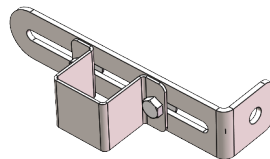
Wall mounting bracket, short

For fixing cabinets to the wall
(GTS series).



Wall mounting bracket, long

For fixing MB/MC cabinets to the wall



Wall mounting bracket for FK

For fixing FK table in wall



Flush pipe (short) for mounting on cabinet, basin rail / sink.

Delivered complete for assembly in a hole, creates air gap according to liquid category 5 requirements according to SS-EN 1717.

Fits GTS-E65, GTS-E50, GTS Mini, MC, FK-STD as well as basin rails and sinks from other manufacturers.



Flush pipe (long), for mounting in bench behind UK-cone

Supplied complete, creates air gap as required on liquid category 5 according to SS-EN 1717.

Suitable for basin rails and sinks from other manufacturers.



Hose with protective steel-covered stocking 9mm internal, connection G $\frac{1}{2}$ " internal thread.

Length 1.5m, for connection to cold water line with G $\frac{1}{2}$ " external thread.



Vacuum valve, G $\frac{1}{2}$ ", external thread.

For the incoming flush water line and is used as supplementary protection to the protections that meet the requirements for liquid category 5 according to SS-EN 1717.

Disperator AB

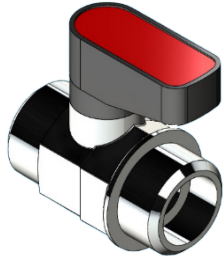
Mälarvägen 9, 141 71 Segeltorp
Tel 08-724 01 60
info@disperator.se, www.disperator.se



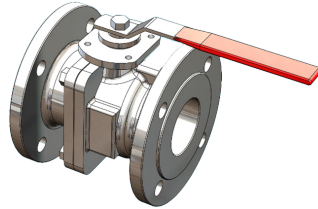
Ref: Option_for_installation_en_220926

disperator® OPTION FOR FOOD WASTE SYSTEM

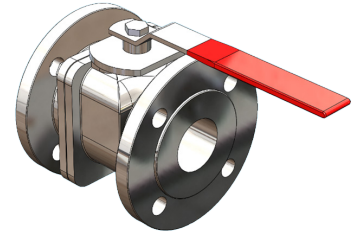
INSTALLATION MATERIALS



Shutdown and flow control valve, G $\frac{1}{2}$ "
G $\frac{1}{2}$ " ext./ext. times Installed before line strainer
in the incoming flush water line.



2" Compact ball valve, flanged, AISI 316
Fits GTS-E50 and GTS-Mini, L = 155mm



2,5" Compact ball valve, flanged, AISI 316
Fits GTS-E65, L = 175mm



Fixed water trap for vertical floor connection (S-shape)

See specific product sheet for details.

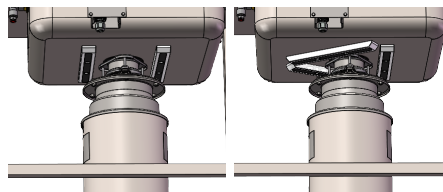
Water trap G2", ext. thread for models 510A, 515A, 520A.

As an option, this water trap is also available in acid-resistant stainless steel.

Water trap G2 $\frac{1}{2}$ ", ext. thread for models 530A, 550A, 575A.

Short outlet connection to the FK series.
Long outlet connection to MB/MC cabinet.

See current product sheet for our various water trap option.



Magnet

For mounting under the sink.

The pictures show installation 2 alt. 3 magnets.

Disperator AB

Mälarvägen 9, 141 71 Segeltorp
Tel 08-724 01 60
info@disperator.se, www.disperator.se

