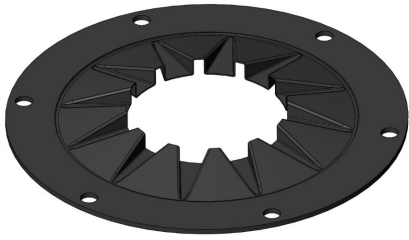
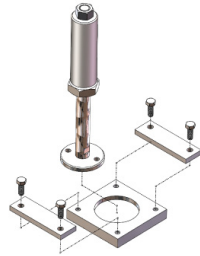


OTHER OPTIONS



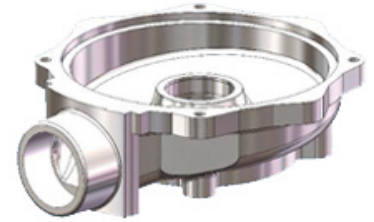
Noise- and vibration-damping flange seal in the disposer inlet

Fits all previously delivered disposer models and most assemblies (not for BS-K, ATF-K)
Reduces the sound pressure level by 3 to 6 dB(A), depending on disposer size, mounting method and water supply method.
Can replace the standard seal -08 between disposer and mounting flange.



Legs with weldable mounting plate

Choose these plates to quickly and easily dismantle a cabinet if, for example, it needs to be moved during service work. Manufactured in stainless steel EN 1.4301 (AISI 304).
Can also be delivered in acid-resistant steel EN 1.4404 (AISI 316) at an additional cost.



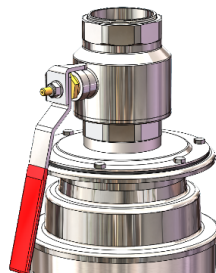
End shield for alkaline media (pH >9)

For use with strong alkaline media (e.g. strong detergents).



Top lid for MC, for reduced sound level

The lid opens and a spring loaded latch holds it in position. Attenuates the sound pressure level with approx. 3 dB(A).
Available both for MC with flush water outlet and MC with flush nozzle.



3" Ball valve, internal threaded, AISI 316

To close drains in sinks.
The valve's construction height is 160 mm.

Disperator AB

Mälärvägen 9, 141 71 Segeltorp
Tel 08-724 01 60
info@disperator.se, www.disperator.se

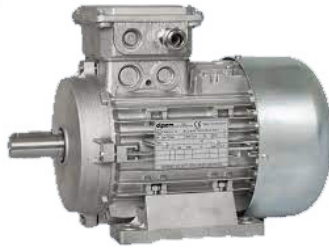


ELECTRIC - OTHER OPTIONS



Tropic-proof motors

Equipped with internal heating cable to prevent condensation from occurring in tropical conditions, where extremely high humidity and large temperature differences between day and night often occur.



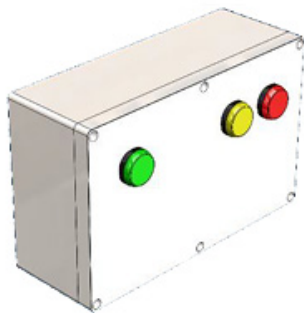
Explosion-proof motors

To prevent sparks, electric arc and dangerously high temperatures occur in areas with a risk of explosion.



Higher IP class than standard

Enclosures for control systems and controls can be delivered in a higher IP class than standard IP65. *The enclosures are available in IP66, IP67 or IP69.*



DUC (Data Under Central)

For the GTS series. Level sensor kit for communication between disposer and tank, potential-free contacts for connection to DUC.



Control of several disposers/processors to a tank system

To control the signals from disposers/processors which are connected to a set of level sensors and a tank.



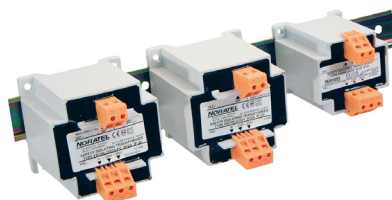
Level sensor

Level sensor for tank emptying alarm at high tank level. *Controls disposer and pump.*



Running time gauge

Durable, robust and maintenance-free for measurement of run time of disposers and processors, to determine preventive maintenance intervals.



Transformers

for 24V, 115V, 230V operating voltage when the neutral conductor is missing at 400V/440V supply voltage.



Timer control

See the current product sheet for our various timer control options.

Disperator AB

Mälärvägen 9, 141 71 Segeltorp
Tel 08-724 01 60
info@disperator.se, www.disperator.se

