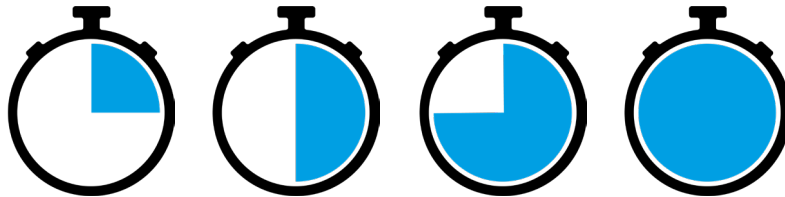


TIMER CONTROL

Automatic use of food waste disposers using timers



A DISPERATOR 500A Excellent food waste disposer is designed for ease of use. The operator starts the disposer and the work of immediately removing food waste from the galley or galley continues until the disposer is manually stopped by pressing the stop button.

However, there are times when time and labor can be saved by automatically controlling the disposer. For example, when the operator has to leave the disposer to attend to other tasks or when the flow of flushing water needs to continue for a few seconds after the disposer has stopped, to further improve the transport of waste through the drain.

DISPERATOR offers four different timer controls that can be included in the control circuit to regulate the time the disposer motor and/or the flush water solenoid valve is running. Timers run on voltages between 24V and 240V. Transformers are required for marine installations. Other controls can be included for planning.

Disperator AB

Mälarvägen 9, 141 71 Segeltorp
Tel 08-724 01 60
info@disperator.se, www.disperator.se

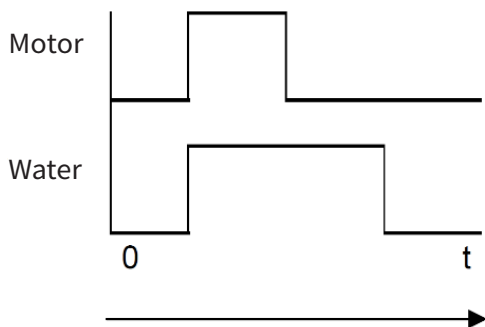


TIMER CONTROL

Timer control TIM-00-01-01

For automatic stop of the waste disposer with a continued water flushing period afterwards.

- The operator starts the disposer manually by pressing the start button. A timer regulates the simultaneous running period of the motor and flushing water. A second timer regulates the period the flushing water will continue to run after the period the first timer has stopped the disposer motor. The required running time for both timers are adjustable.
- By automatically extending the period that the water flows through the system after the waste disposer has stopped, flushed food residues are removed without manual monitoring. The operator can leave the disposer for other tasks immediately after starting the disposer.
- Timer control TIM-00-01-01, motor and control voltage must be specified when ordering.



Settings

KM01

- a) TIMER RANGE: 1-10 min.
- b) TIME SETTINGS: 1 (1 min)
- c) TIMER FUNCTION: B

RUNTIME FOR DISPOSER AND WATER FLUSHING TIME CAN BE SET 1 – 10 min.

KW01

- a) TIMER RANGE: 6-60s.
- b) TIME SETTINGS: 3 (18s)
- c) TIMER FUNCTION: C

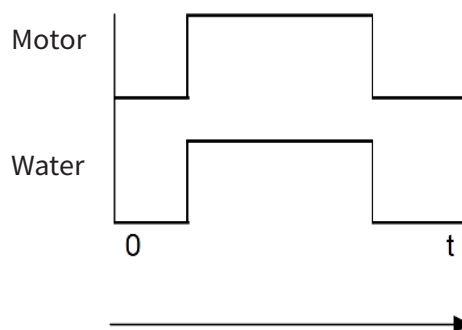
CONTINUOUS WATER FLUSHING PERIOD AFTER DISPOSER STOP CAN BE SET 6 – 60s.



Timer control TIM-00-02-01

For automatic shutdown of the waste disposer and flushing water.

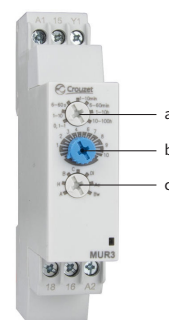
- The operator starts the disposer manually by pressing the start button. The pre-set timer regulates the simultaneous running of the disposer motor and flushing water. The required running time is adjustable.
- This function is helpful when the operator has to leave the waste disposer before the grinding process is complete.
- Timer control TIM-00-02-01, motor and control voltage must be specified when ordering.



Settings

- a) TIMER RANGE: 1-10 min.
- b) TIME SETTINGS: 1 (1 min)
- c) TIMER FUNCTION: B

RUNTIME FOR DISPOSER AND WATER FLUSHING TIME CAN BE SET 1 – 10 min.

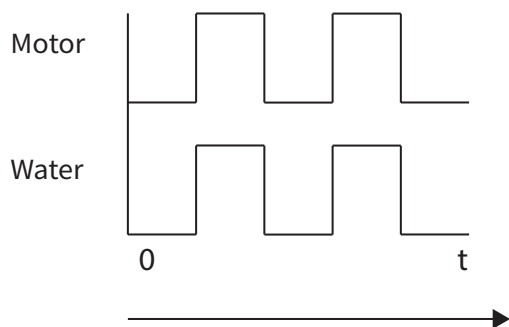


TIMER CONTROL

Timer control TIM-00-03-01

For repetitive run periods for the disposer and flush water.

- The operator starts the disposer manually by pressing the start button. The motor and flushing water start and run simultaneously and at a preset interval in repetitive cycles. The function is stopped by pressing the stop button. Operation and pause intervals are adjustable and can be of different lengths.
- As the disposer is faster than the operator, this timer function is for example valuable in a dishwashing area, where the operator for a longer period is removing food waste from dishes. Among other things it saves fresh flushing water.
- Timer control TIM-00-03-01, motor and control voltage must be specified when ordering.



Settings

Ton

a) TIME SETTINGS: 6-60

RUNTIME FOR DISPOSER AND WATER FLUSHING
TIME CAN BE SET 0.1s - 100h.

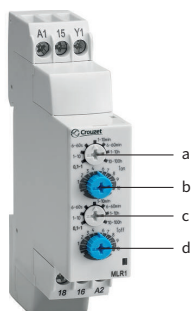
b) Ton: 5 (1-10 THE SCALE IN SECONDS) (6s x 5 = 30s).

Toff

c) TIME SETTINGS: 6-60

PAUSTIME FOR DISPOSER AND WATER FLUSHING
TIME CAN BE SET 0.1s - 100h.

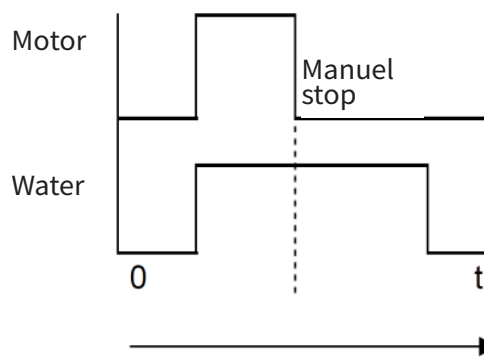
d) Toff: 5 (10 x THE SCALE IN SECONDS) (6s x 5 = 30s).



Timer control TIM-00-04-01

For automatic delayed stop of the flushing water after manually stopping the disposer.

- The operator starts or stops the disposer manually by pressing the appropriate button. A timer regulates the period the water flushes after the operator has pressed the stop button.
- By automatically extending the period that the water flows through the system after the waste disposer has stopped, flushed food residues are removed without manual monitoring.
- Timer control TIM-00-04-01, motor and control voltage must be specified when ordering.



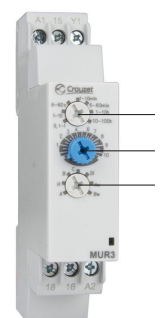
Settings

a) TIMER RANGE: 6- 60s

b) TIME SETTINGS: 3 (18s)

c) TIMER FUNCTION: C

CONTINUOUS WATER FLUSHING PERIOD AFTER DISPOSER STOP
CAN BE SET FROM 6 - 60s.



Disperator AB

Mälärvägen 9, 141 71 Segeltorp

Tel 08-724 01 60

info@disperator.se, www.disperator.se

