

disperator[®] FOOD WASTE PROCESSOR

500A-GTS-MINI EXCELLENT SERIES



- Grinding and transportation of food waste to tank with the addition of minimal amount of water
- Retains the energy content for decay and biogas production at a later stage
- Improved hygiene, working environment and ergonomics when working in a kitchen. The handling, storage and emptying of refuse containers is no longer necessary
- Rapid disposal of food waste with a high degree of reliability
- Easy to operate and clean
- Reduced need for transportation and lower costs for food waste collection
- Standard delivery includes the outer cabinet made of stainless steel AISI304. As option the outer cabinet are also available in acid proof stainless steel AISI316 for outdoor installation in sea water environments



Immediately and efficiently removing the heaviest part of kitchen waste – food leftovers – is a necessity in any commercial kitchen. In case water-based food waste disposers connected to the municipal sewer not are allowed in your municipality, one of Disperator developed and unique processor technology instead can handle the task. When using the patent pending GTS-Series processor, food waste can hygienically and without any heavy lifting or manual transfer easily take care of and reduce the total amount of refuse – by volume, but above all by weight!

Food waste is fed into the inlet hopper of the machine and ground into small particles for further transport in a pipe using a unique processor pump to a sealed and odorless tank, and when full, emptied by a vacuum truck. As desired, the tank could be placed outdoors buried in the ground, as well as indoors.

The unique benefit of this processor technology is that the pumping of the ground food waste can

be done with minimal amount of flushing water, which gives a good operating economy as the tank does not need to be emptied as often. The slurry is transported to an anaerobic digestion facility and converted into valuable renewable energy resource (i.e. biogas), and often the digested residue can also be used as fertilizer on farmland. Biogas is one of our society's most environmentally clean and desired energy forms, as fuel for cars as well as for the production of heat and electricity.

Disperator GTS-Series processor fulfills the relevant provisions of the Machinery Directive 2006/42/EC, Low Voltage Directive 2014/35/EU and the EMC Directive 2014/30/EU.

All Disperator Excellent GTS-Series of processors have the Statement of Compliance issued by DNV GL verifying compliance with applicable sections of MARPOL Annex V REGULATIONS FOR THE CONTROL OF POLLUTION BY GARBAGE FROM SHIPS AND PLATFORMS, as amended in 2019.

Disperator AB

Mälarvägen 9, SE-141 71 Segeltorp, Sweden
Tel +46-8-724 01 60
info@disperator.se, www.disperator.se



Ref: 500A_GTS-Mini_pb_en_240808

disperator[®] FOOD WASTE PROCESSOR

500A-GTS-MINI EXCELLENT SERIES

Front view

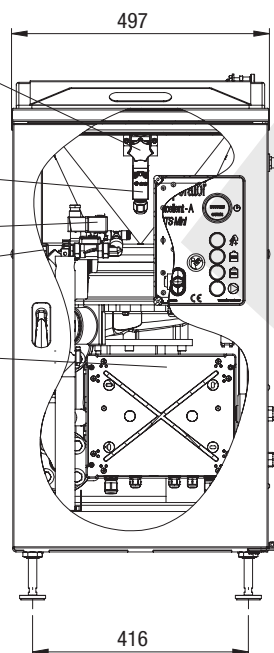
Star knob for securing the protective cover in the inlet hopper, and also for attaching the sealing plug over the two holes in the hopper during daily cleaning (see also the next page)

Safety interlock switch, IP67, connected to protective cover in inlet hopper

Solenoid valve, IP65

Line strainer

Machine control unit incl. resettable motor protectors for the grinder and the pump. Placed inside the cabinet door



Digital running time gauge

Red lamp lights up = tank is full, the machine cannot be started until the tank is emptied

Yellow lamp lights up = order emptying of tank

Blue button (spring loaded) for extra flushing water for dry food waste and also for emptying the piping from waste before longer operating breaks in the kitchen

Yellow button (spring loaded) for machine emptying:
• after cleaning,
• after batch of liquid waste,
• when servicing the pump

Machine start and stop buttons



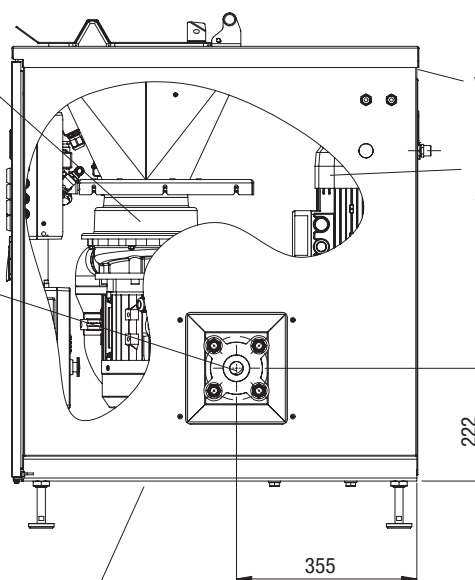
Right side view

Grinder, IP55, see table page 5

Pump outlet to the right with connection flange DN50 (outer Ø 165mm, 4x mounting holes Ø 18mm on hole circle Ø 125mm). Pressure class PN16.

Counter flange and tubing is not included in standard delivery.

Considering this interface DN50 at GTS outlet, never reduce or increase inner diameter of subsequent drain pipes going to tank. If DN50, PN16 pipe is not used, this can lead to that the drain pipe breaks, or to blockage in the pipe due to lower flow velocity and accompanying sedimentation. The only reason to increase the inner diameter of the drain pipe is if several GTS processors are connected to the same main line that goes to one and the same tank. Please consult us at Disperator – we will be happy to assist you with the necessary calculations.



Ventilation outlet

Processor pump IP55 for transport of grinded food waste to tank, see table page 5

Ventilation inlet

Measures in mm

Disperator AB

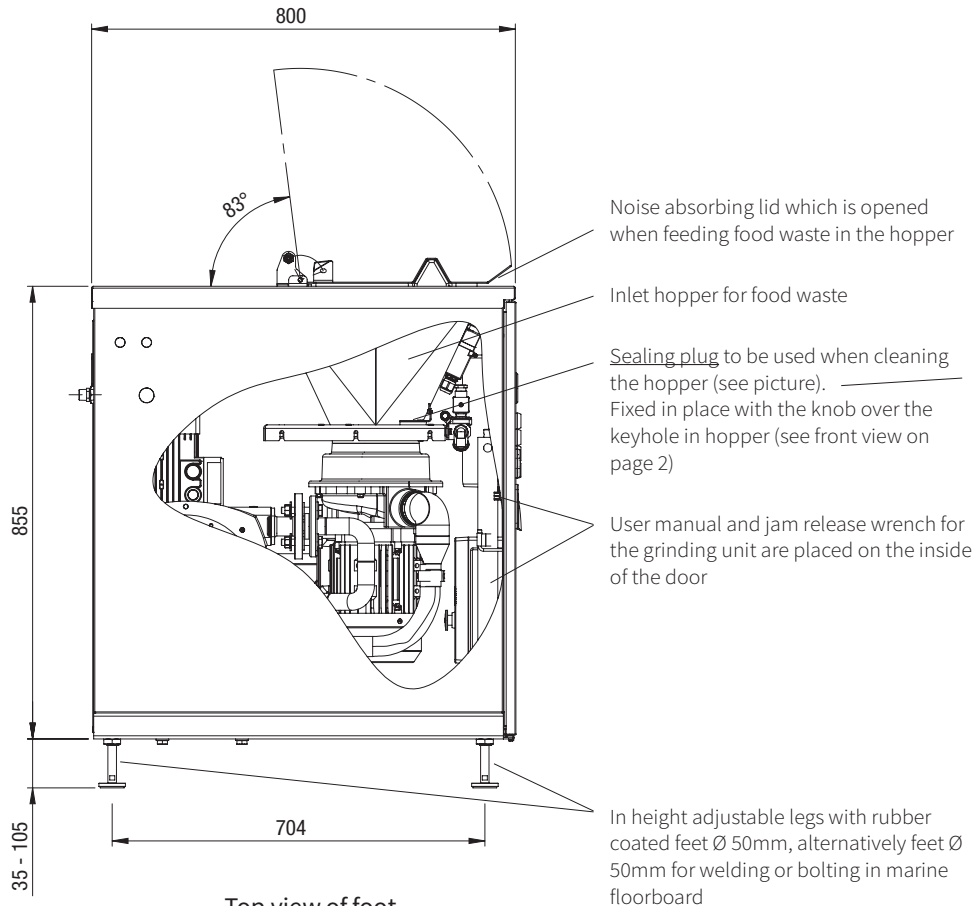
Mälarvägen 9, SE-141 71 Segeltorp, Sweden
Tel +46-8-724 01 60
info@disperator.se, www.disperator.se

Ref: 500A_GTS-Mini_pb_en_240808

disperator[®] FOOD WASTE PROCESSOR

500A-GTS-MINI EXCELLENT SERIES

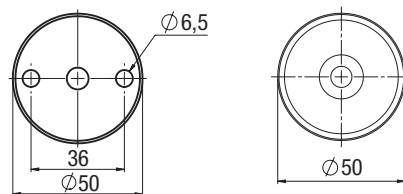
Left side view



Top view of foot

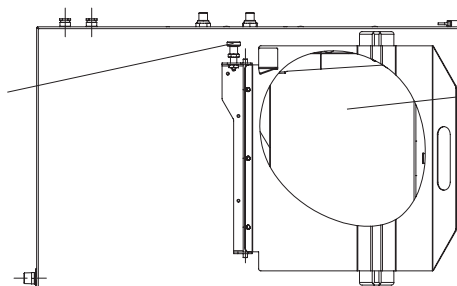
Marine version

Land version



Top view

Spring-loaded bolt for locking the lid in opened position



Protective cover with magnetic cutlery trap in the feeding hopper to the disposer, linked to safety interlock switch. Removed during daily cleaning. The machine will then not start until the cover is back in place

Measures in mm

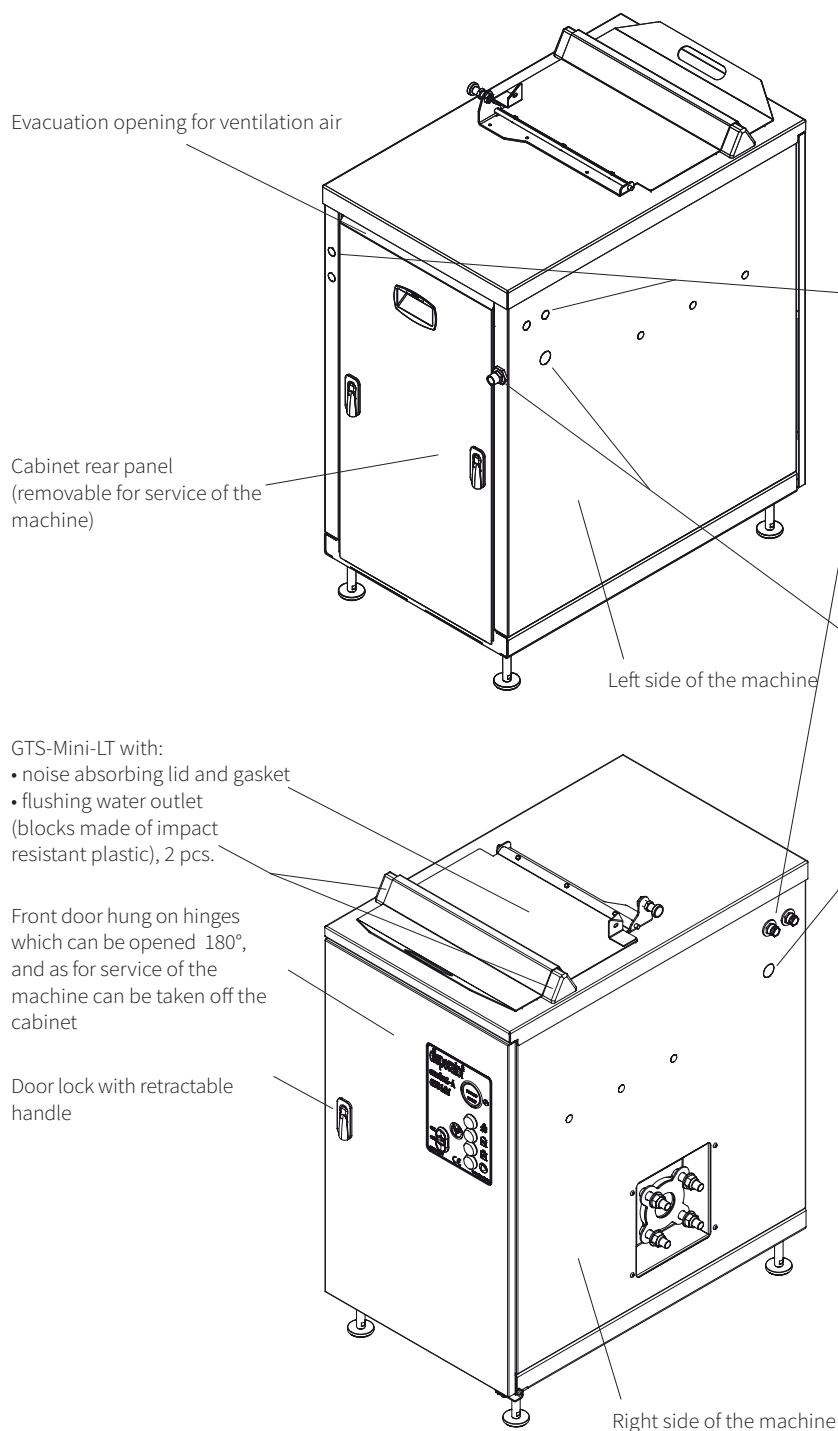
Disperator AB

Mälarvägen 9, SE-141 71 Segeltorp, Sweden
Tel +46-8-724 01 60
info@disperator.se, www.disperator.se

Ref: 500A_GTS-Mini_pb_en_240808

disperator[®] FOOD WASTE PROCESSOR

500A-GTS-MINI EXCELLENT SERIES



When ordering, specify one of the following codes for the desired position in the cabinet of the below entries.

If not given in your order, these three entries will as standard be placed on the right side of the machine.

- 2m cable for connection via security breaker on the wall / bulkhead to fuse cabinet (but without connection to earth leakage circuit breaker),
- signal cable from the level sensors in the tank.

Code:	Seen from the front the two cable entries are placed on:
Cable-L	the left side of the machine
Cable-B	the back of the machine
Cable-R	the right side of the machine

- Connection R $\frac{1}{2}$ " (BSPT), external thread for cold flushing water. NOTE: Hot water is not necessary, see note 3

Code:	Seen from the front the entry is placed on:
Water-L	the left side of the machine
Water-B	the back of the machine
Water-R	the right side of the machine

Disperator AB

Mälarvägen 9, SE-141 71 Segeltorp, Sweden
Tel +46-8-724 01 60
info@disperator.se, www.disperator.se

Ref: 500A_GTS-Mini_pb_en_240808

disperator® FOOD WASTE PROCESSOR

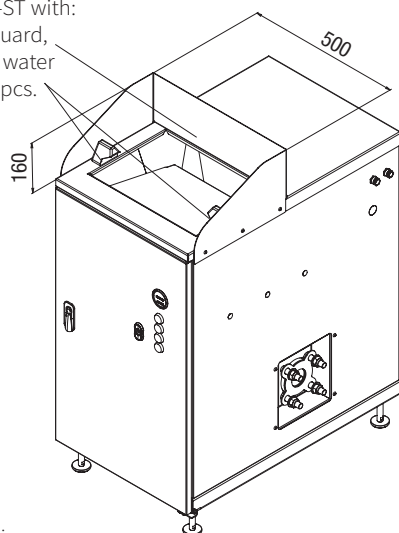
500A-GTS-MINI EXCELLENT SERIES

When ordering, specify the desired version of food waste inlet opening, including type of outlet for intermittent supply of flushing water from solenoid valve according to one of the following three alternatives:

Version designation:	Description:
GTS-Mini-LT	With hinge openable noise absorbing lid with gasket placed over the machine's inlet opening for food waste. The outlet of flushing water takes place from two blocks made of impact resistant plastic with air gap to the inlet opening according to standard EN1717. See the lower figure on the previous page.
GTS-Mini-ST	The machine's inlet opening for food waste is surrounded on three sides by a splash guard. The outlet of flushing water takes place from two blocks made of impact resistant plastic with air gap to the inlet opening according to standard EN1717. See the left figure below.
GTS-Mini-SR	The machine's inlet opening for food waste is surrounded on three sides by a splash guard. The outlet of flushing water takes place from two flush pipes ("goose necks") made of stainless steel with air gap to the inlet opening according to standard EN1717. See the right figure below.

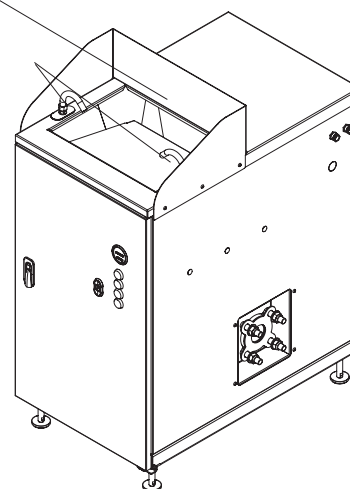
GTS-Mini-ST with:

- splash guard,
- flushing water block, 2pcs.



GTS-Mini-SR with:

- splash guard,
- flushing water pipe ("goose neck"), 2pcs.



Measures in mm

Technical specification	520A-GTS-Mini	530A-GTS-Mini (see note2)
Standard capacity, liters/hr	400	600
Electrical power, kW (disposer+pump)	1,8+1,5	2,5+1,5
Rated current, A to be set on the two processor motor protectors for the following voltages:		
400V / 3 ph. / 50 Hz (disposer+pump)	7,7 (4,4+3,4)	8,9 (5,5+3,4)
440V / 3 ph. / 60 Hz (disposer+pump)	7.3 (4,3+3,0)	8,5 (5,5+3,0)
Control voltage	230V 50/60Hz	230V 50/60Hz
Fuse rating, slow	16A	16A
Characteristic for automatic fuse	D (slow)	D (slow)
Net weight, kg	162	173
Processor drainage outlet	DN50	DN50
Process pump pressure class:	PN16	PN16
The processor operates in the temperature range -5°C to +40°C		

Note 1: Connect the machine via safety switch to fuse cabinet, but without connection to earth leakage circuit breaker.

Note 2: This model is a special version of GTS-Mini for cramped kitchen spaces where you still need to take care of a little more difficult to grind food waste. As there is space in the kitchen, a model of food waste processor in the GTS-E65 series is recommended instead.

Note 3: Recommended incoming water pressure 3 - 6 bar.

Subject to any changes without prior notice.

(1) Installation material needed but not incl. in standard delivery are:

- main electrical safety switch placed on wall/bulkhead for incoming electricity, see note 1,
- hose with protective steel-covered stocking (minimum inner -Ø 9mm) for cold flush water,
- vacuum valve for flushing water pipe when flushing nozzle in hopper is used. Can be ordered from DISPERATOR.

(2) User manual with installation and service instructions, laminated operating instructions and laminated safety instructions as well as electrical documentation are included in delivery.

(3) Options:

- DN50 drain valve,
- equipment for monitoring of tank level,
- waste holding tanks for indoor installation,
- waste holding tanks for installation below ground level outdoors,
- drain pipe with pressure class PN16 in plastic or stainless steel between the processor and the tank,
- DN50 backflow preventer.

Disperator AB

Mälärvägen 9, SE-141 71 Segeltorp, Sweden
Tel +46-8-724 01 60
info@disperator.se, www.disperator.se

Ref: 500A_GTS-Mini_pb_en_240808