

# disperator<sup>®</sup> OPTION FOR FOOD WASTE SYSTEM

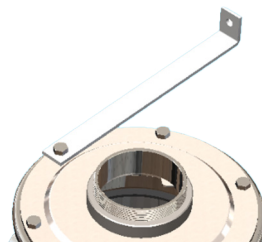
## INSTALLATION MATERIALS



### Electrical safety switch

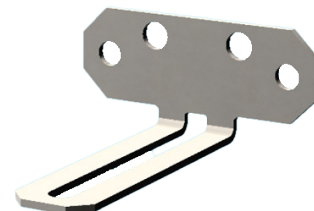
(Safety switch, lockable)

2-pole for 1-phase disposer 500V, 16A  
3-pole for 3-phase disposer 690V, 25A



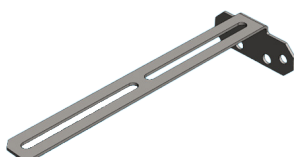
### Torque protection bar for basic disposers with sink assembly model ATF-K, ATV-K och BS-K

Specify length when ordering.



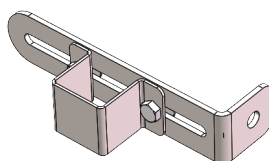
### Wall mounting bracket, short

For fixing cabinets to the wall  
(GTS series).



### Wall mounting bracket, long

For fixing MB/MC cabinets to the wall



### Wall mounting bracket for FK

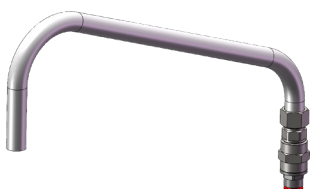
For fixing FK table in wall



### Flush pipe (short) for mounting on cabinet, basin rail / sink.

Delivered complete for assembly in a hole, creates air gap according to liquid category 5 requirements according to SS-EN 1717.

Fits GTS-E65, GTS-E50, GTS Mini, MC, FK-STD as well as basin rails and sinks from other manufacturers.



### Flush pipe (long), for mounting in bench behind UK-cone

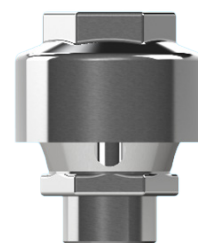
Supplied complete, creates air gap as required on liquid category 5 according to SS-EN 1717.

Suitable for basin rails and sinks from other manufacturers.



### Hose with protective steel-covered stocking 9mm internal, connection G½ inch internal thread.

Length 1.5m, for connection to cold water line with G½ inch external thread.



### Vacuum valve, G½ inch, external thread.

For the incoming flush water line and is used as supplementary protection to the protections that meet the requirements for liquid category 5 according to SS-EN 1717.

## Disperator AB

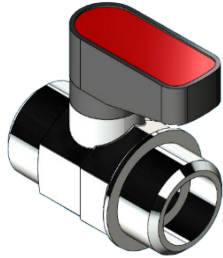
Mälarvägen 9, SE-141 71 Segeltorp  
Tel +46 (8) 724 01 60  
info@disperator.se, www.disperator.se



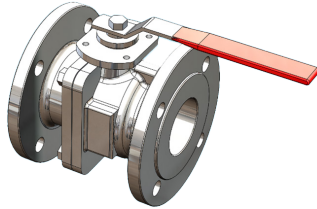
Ref: Option\_for\_installation\_en\_250623

# disperator<sup>®</sup> OPTION FOR FOOD WASTE SYSTEM

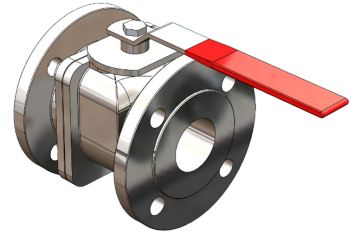
## INSTALLATION MATERIALS



**Shutdown and flow control valve, G $\frac{1}{2}$ "**  
G $\frac{1}{2}$ " ext./ext. times Installed before line strainer in the incoming flush water line.



**2" Compact ball valve, flanged, AISI 316**  
Fits GTS-E50 and GTS-Mini, L = 155mm



**2,5" Compact ball valve, flanged, AISI 316**  
Fits GTS-E65, L = 175mm



### Fixed water trap for vertical floor connection (S-shape)

See specific product sheet for details.

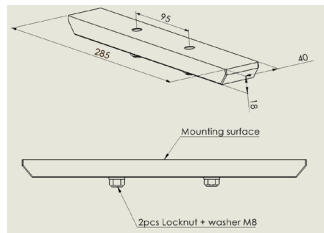
Water trap G2", ext. thread for models 510A, 515A, 520A.

As an option, this water trap is also available in acid-resistant stainless steel.

Water trap G2 $\frac{1}{2}$ ", ext. thread for models 530A, 550A, 575A.

Short outlet connection to the FK series.  
Long outlet connection to MB/MC cabinet.

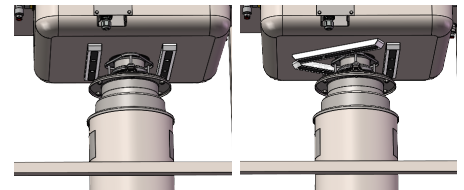
See current product sheet for our various water trap option.



### Magnet

For mounting under existing plate.

The picture show assembly instructions.



### Magnet

For mounting under the sink.

The pictures show installation 2 alt. 3 magnets.

## Disperator AB

Mälarvägen 9, SE-141 71 Segeltorp  
Tel +46 (8) 724 01 60  
info@disperator.se, www.disperator.se



Ref: Option\_for\_installation\_en\_260523